



BHARAT INSTITUTE OF TECHNOLOGY

Mangalpally, Ibrahimpatnam, R.R. District, PIN-501510

(Affiliated to JNTUH, Approved by AICTE and PCI, New Delhi. Accredited by NAAC)

EVALUATION PROCEDURE FOR COs AND Pos ATTAINMENT

Course Outcomes (COs) are well defined and are prepared for each course by respective subject Teacher. The level of attainment for COs for both internal and University examination is set for B. Pharm, M. Pharm & Pharm D course on the scale of 0 to 3 based on marks scored by students.

The final CO attainment is calculated by making correlation between attainment through internal Examination and continuous assessment with 25% weightage and external exam with 75% weightage.

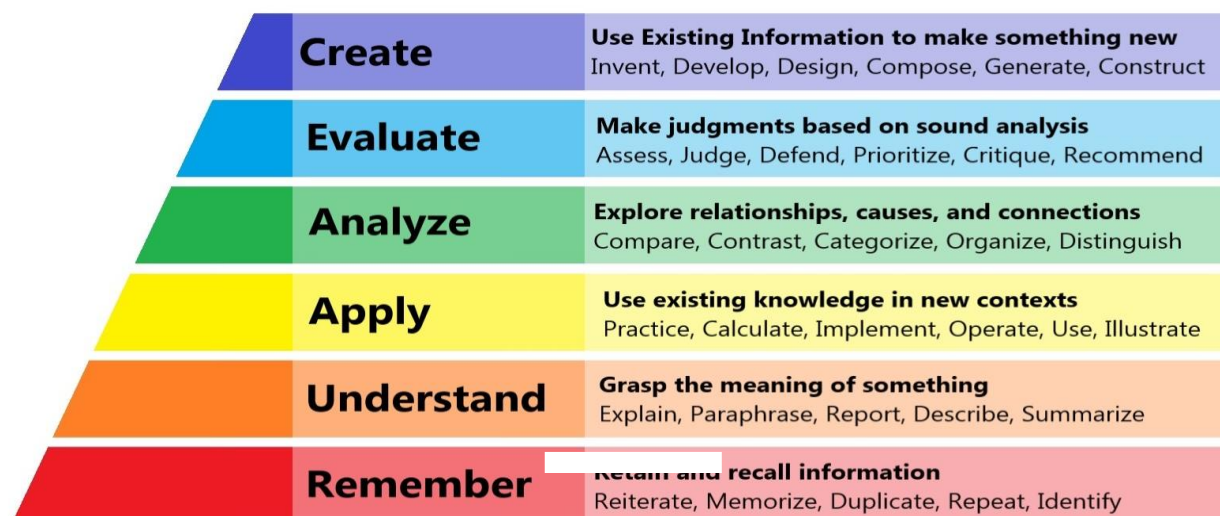
The level of POs attainment is measured by methods like direct and indirect tools. By above methods Institution ensures attainment of Cos and POs through well-defined assessment criteria

Bloom's Taxonomy

Bloom's taxonomy of thinking and learning illustrates forms of thinking, in ascending order of Complexity, from lower-order thinking skills (LOTS) to higher-order thinking skills (HOTS). It begins with remembering and ends with creating. This is used by lecturers to set learning outcomes and assessment criteria for a course or module.

The knowledge about a subject alone, like having access to a range of information, or 'facts', is at the simplest or lowest level. Higher and more complex levels include the ability to analyze, synthesize and evaluate information by comparing and contrasting different points of view, sets of information or experiences. This might involve them to make predictions.

BLOOM'S TAXONOMY



helpfulprofessor.com



BHARAT INSTITUTE OF TECHNOLOGY

Mangalpally, Ibrahimpatnam, R.R. District, PIN-501510

(Affiliated to JNTUH, Approved by AICTE and PCI, New Delhi. Accredited by NAAC)

Course outcomes:

The course outcomes shall provide chance for students to prove the knowledge, skills and expertise learned from the specific course. On completion of these courses the students will be able to gain knowledge, Practical skills and attitude. The course outcomes are thus directly measured, and are related to the program outcomes. Therefore, if the course outcomes are achieved, the program outcomes are also achieved.

Process of preparation of course outcomes:

The course objectives of all courses are mentioned in curriculum prescribed by the University.

All course outcomes are developed using Bloom's taxonomy and consequently assignments, internal exam and practical are aligned to CO addressing the level of Bloom's taxonomy.

Each faculty has designed COs based on the number of units in syllabus ranging between 4-8
The course outcomes of all courses are revised, as per change of syllabus by the University.

Methods of measuring the course outcomes:

The course outcomes are assessed by the performance of students in the internal exams, continuous assessment and external exam.

Internal exam and continuous assessment are planned in such a way that they cover the entire course Outcomes.

CO Attainment based on University exam (CU)

For every theory course, 40% is taken as the bench-mark value. Number of students scoring more than

The bench-mark value in each subject is used to compute the attainment level as defined below:

% of students \geq bench mark	Attainment level
60	1
70	2
80	3

CO Attainment based on internal exam (CI)

For every subject 50% is taken as the bench-mark value. Number of students scoring more than the

Bench-mark value in each subject is used to compute the attainment level as defined below:



BHARAT INSTITUTE OF TECHNOLOGY

Mangalpally, Ibrahimpatnam, R.R. District, PIN-501510

(Affiliated to JNTUH, Approved by AICTE and PCI, New Delhi. Accredited by NAAC)

% of students \geq bench mark	Attainment level
60	1
70	2
80	3

Overall CO attainment:

80% weightage is given to University examination and 20% weightage to Internal examinations.

Overall CO attainment = $0.8 * CU + 0.2 * CI$

Program Outcomes:

Program outcomes are prescribed by NBA and are listed below;

PO1: Pharmacy Knowledge

P02: Planning Abilities

P03: Problem analysis

P04: Modern tool usage

P05: Leadership skills.

P06: Professional Identity

P07: Pharmaceutical Ethics

P08: Communication

P09: Pharmacist and society

POIO: Environment and sustainability

POII: Life long learning

Methods of measuring the Program outcome Attainment:

All Programme outcomes are evaluated by Direct and indirect tools.

Direct and Indirect tools

Direct attainment level of a PO shall be determined by calculating an average of attainment of all course outcomes which are mapped with the PO.

Indirect attainment level of a PO shall be determined based on the Feedbacks/Surveys.

The attainment of each Programme outcome shall be based on weight ages of direct and indirect tools determined.

Direct tools 80% weightage & Indirect tools 20% is taken and overall PO attainment is calculated by combining direct & indirect attainment levels.



BHARAT INSTITUTE OF TECHNOLOGY

Mangalpally, Ibrahimpatnam, R.R. District, PIN-501510

(Affiliated to JNTUH, Approved by AICTE and PCI, New Delhi. Accredited by NAAC)

Direct Attainment Tools:

The various direct assessment tools for assessing the POs attainment are as follows:

Assessing Tool	Method Used
Continuous assessment	MCQ
	Seminar
	Case Study
Internal Examination	
Theory	Based on weightage and fix format given by university, Short and long questions are asked.
Practical	Daily evaluation: Planning, analysis of lab skill, Pharmacy Knowledge, modern tool .usage, lifelong learning. Practical Examination: Synopsis, Viva-voce, Major and minor experiment.
University Examination	
Theory	Based on weightage and fix format given by university, Short and long questions are asked.
Practical	Synopsis, Viva-voce, Major and minor experiment.

Indirect Attainment Tools:

The various indirect assessment tools for assessing the students and the PO attained are as follows:

Assessing Tool	Purpose
Graduate Exit Survey	To assess the contribution of the Program in the overall development of the graduates.
Alumni Survey	To assess the effectiveness of Program for the career development of the graduates



BHARAT INSTITUTE OF TECHNOLOGY

Mangalpally, Ibrahimpatnam, R.R. District, PIN-501510

(Affiliated to JNTUH, Approved by AICTE and PCI, New Delhi. Accredited by NAAC)

CO Attainment

Sub code	Name of Subject		Set target	CO1	CO2	CO3	CO4	CO5	CO6	Average		CO Attainment
PS101	Human Anatomy and Physiology I	Internal& CA	50	3	1	1	2			1.75	0.67	2.92
		university	40	3						3	2.25	
PS102	Pharmaceutical Analysis 1	Internal& CA	50	2	3	1	2			2	0.40	1.11
		university	40	2						2	0.71	
PS103	Pharmaceutics I	Internal& CA	50	3	3	2	1	2		2.2	0.75	3
		university	40	3						3	2.25	
PS104	Pharmaceutical Inorganic Chemistry-I	Internal& CA	50	2	1	2	1	1		1.4	0.40	1.90
		university	40	2						2	1.50	
HS 105	Communication skills	Internal& CA	50	3	3	3	3			3	0.75	3
		university	40	3						3	2.25	
BS106	Remedial Biology	Internal& CA	50	3	2	1	1			1.75	0.54	2.79
		university	40	2						2	2.25	
BS107	Remedial Mathematics	Internal& CA	50	2	1	1	2			1.5	0.29	2.54
		university	40	2						2	0.25	
PS108	Human Anatomy and Physiology-I lab	Internal& CA	50	3	2	3	3			2.75	0.75	3
		university	40	3						3	2.25	
PS109	Pharmaceutical Analysis I lab	Internal& CA	50	3	2	3	3			2.75	0.75	3
		university	40	3						3	2.25	


PRINCIPAL
 Bharat Institute of Technology
 Mangalpally (M), Ibrahimpatnam (M),
 R.R. Dist - 501 510, Telangana.



BHARAT INSTITUTE OF TECHNOLOGY

Mangalpally, Ibrahimpatnam, R.R. District, PIN-501510

(Affiliated to JNTUH, Approved by AICTE and PCI, New Delhi. Accredited by NAAC)

PS110	Pharmaceutics lab	Internal& CA	50	3	2	3	3			2.75	0.75	3
		university	40	3							3	
PS111	Pharmaceutical Inorganic Chemistry lab	Internal& CA	50	3	2	3	3			2.75	0.75	3
		university	40	3							3	
HS112	Communication skills lab	Internal& CA	50	3	2	3	3			2.75	0.75	3
		university	40	3							3	
BS113	Remedial Biology lab	Internal& CA	50	3	2	3	3			2.75	0.75	3
		university	40	3								
PS201	Human Anatomy and Physiology II	Internal& CA	50	3	1	1	2			1.75	0.67	2.92
		university	40	3							3	
PS202	Pharmaceutical Organic Chemistry-I	Internal& CA	50	2	1	2	1	1		1.4	0.40	1.90
		university	40	2							2	
BS203	Biochemistry	Internal& CA	50	3	2	2	2			2.25	0.65	2.19
		university	40	2							2	
BS204	Pathophysiology	Internal& CA	50	1	1	1	1	2		1.2	0.29	2.54
		university	40	1							1	
CS205	Computer Applications in Pharmacy	Internal& CA	50	3	3	3	3	3		3	0.75	3
		university	40	3							3	
PS206	Human Anatomy and Physiology II lab	Internal& CA	50	3	3	2	3			2.75	0.67	2.92
		university	40	3							3	


PRINCIPAL
 Bharat Institute of Technology
 Mangalpally (M), Ibrahimpatnam (M),
 R.R. Dist - 501 510, Telangana.



BHARAT INSTITUTE OF TECHNOLOGY

Mangalpally, Ibrahimpatnam, R.R. District, PIN-501510

(Affiliated to JNTUH, Approved by AICTE and PCI, New Delhi. Accredited by NAAC)

PS207	Pharmaceutical Organic Chemistry-I Lab	Internal& CA	50	3	2	2	3			2.5	0.70	2.95
		university	40	3					3	2.25		
BS208	Biochemistry lab	Internal& CA	50	3	3	2	3			2.75	0.67	2.92
		university	40	3					3	2.25		
CS209	Computer Applications in Pharmacy lab	Internal& CA	50	3	2	2	3			2.5	0.70	2.95
		university	40	3					3	2.25		
PS301	Pharmaceutical Organic Chemistry-II	Internal& CA	50	2	3	2	1			2	0.54	2.79
		university	40	2					2	2.25		
PS302	Physical Pharmaceutics-I	Internal& CA	50	2	2	1	3			2	0.58	2.83
		university	40	2					2	2.25		
BS303	Pharmaceutical Microbiology	Internal& CA	50	3	2	3	2	2		2.4	0.69	2.94
		university	40	3					3	2.25		
PC304	Pharmaceutical Engineering	Internal& CA	50	2	1	2	1	2		1.8	0.54	2.79
		university	40	2					2	2.25		
PS305	Pharmaceutical Organic Chemistry-II Lab	Internal& CA	50	3	2	2	3			2.5	0.70	2.95
		university	40	3					3	2.25		
PS306	Physical Pharmaceutics-I Lab	Internal& CA	50	3	3	2	3			2.75	0.69	2.94
		university	40	3					3	2.25		


PRINCIPAL
 Bharat Institute of Technology
 Mangalpally (M), Ibrahimpatnam (M),
 R.R. Dist - 501 510, Telangana.



BHARAT INSTITUTE OF TECHNOLOGY

Mangalpally, Ibrahimpatnam, R.R. District, PIN-501510

(Affiliated to JNTUH, Approved by AICTE and PCI, New Delhi. Accredited by NAAC)

BS307	Pharmaceutical Microbiology Lab	Internal& CA	50	3	3	2	3			2.75	0.69	2.94
		university	40	3							3	
PC308	Pharmaceutical Engineering Lab	Internal& CA	50	3	2	3	2	3		2.6	0.69	2.94
		university	40	3							3	
PS401	Pharmaceutical Organic Chemistry-III	Internal& CA	50	2	1	2	1	1		1.4	0.40	1.90
		university	40	2							2	
PC402	Physical Pharmaceutics-II	Internal& CA	50	2	2	1	3			2	0.58	2.83
		university	40	2							2	
PS403	Pharmacology-I	Internal& CA	50	2	1	3	2	3		2.2	0.51	2.76
		university	40	2							2	
PC404	Pharmacognosy and Phytochemistry-I	Internal& CA	50	3	2	3	2	3		2.6	0.69	2.94
		university	40	3							3	
PS405	Pharmaceutical Jurisprudence	Internal& CA	50	2	2	1	3			2	0.58	2.83
		university	40	2							2	
PC406	Physical Pharmaceutics-II Lab	Internal& CA	50	3	3	2	3	2		2.6	0.70	2.95
		university	40	3							3	
PS407	Pharmacology-I Lab	Internal& CA	50	3	3	2	3			2.75	0.69	2.95
		university	40	3							3	
PC408	Pharmacognosy and	Internal& CA	50	3	3	2	3	2		2.6	0.70	2.95


PRINCIPAL
 Bharat Institute of Technology
 Mangalpally (M), Ibrahimpatnam (M),
 R.R. Dist - 501 510, Telangana.



BHARAT INSTITUTE OF TECHNOLOGY

Mangalpally, Ibrahimpatnam, R.R. District, PIN-501510

(Affiliated to JNTUH, Approved by AICTE and PCI, New Delhi. Accredited by NAAC)

	Phytochemistry-I Lab	university	40	3					3	2.25	
PS501	Medicinal Chemistry I	Internal& CA	50	2	1	2	1	1	1.4	0.40	1.90
		university	40	2					2	1.50	
PS502	Industrial Pharmacy - I	Internal& CA	50	2	3	2	2	1	2	0.69	2.95
		university	40	2					2	2.25	
PS503	Pharmacology II	Internal& CA	50	2	1	3	2	3	2.2	0.51	2.76
		university	40	2					2	2.25	
PS504	Pharmacognosy and Phytochemistry - II	Internal& CA	50	3	2	2	3		2.5	0.70	2.95
		university	40	3					3	2.25	
PS508	Cosmetic science	Internal& CA	50	3	2	3	3		2.75	0.69	2.95
		university	40	3					3	2.25	
PC509	Medicinal Chemistry I Lab	Internal& CA	50	3	2	3	3		2.75	0.70	2.95
		university	40	3					3	2.25	
PS510	Industrial Pharmacy – I lab	Internal& CA	50	3	3	2	3		2.75	0.69	2.95
		university	40	3					3	2.25	
PS511	Pharmacology - II lab	Internal& CA	50	3	3	2	3		2.75	0.69	2.95
		university	40	3					3	2.25	
PS512	Pharmacognosy and	Internal& CA	50	3	2	3	3		2.75	0.70	2.95


PRINCIPAL
 Bharat Institute of Technology
 Mangalpally (M), Ibrahimpatnam (M),
 R.R. Dist - 501 510, Telangana.



BHARAT INSTITUTE OF TECHNOLOGY

Mangalpally, Ibrahimpatnam, R.R. District, PIN-501510

(Affiliated to JNTUH, Approved by AICTE and PCI, New Delhi. Accredited by NAAC)

	Phytochemistry - II lab	university	40	3					3	2.25	
PS601	Medicinal Chemistry - II	Internal& CA	50	2	1	2	1	1	1.4	0.40	1.90
		university	40	2					2	1.50	
PS602	Pharmacology - III	Internal& CA	50	2	1	3	2		2	0.51	2.76
		university	40	2					2	2.25	
PS603	Herbal Drug Technology	Internal& CA	50	3	1	2	2		2	0.40	1.90
		university	40	2					2	1.50	
PS604	Biopharmaceutics and Pharmacokinetics	Internal& CA	50	3	2	3	2	3	2.6	0.69	2.94
		university	40	3					3	2.25	
PS605	Pharmaceutical Quality Assurance	Internal& CA	50	3	2	3	2	3	2.6	0.63	2.88
		university	40	3					3	2.25	
PS609	Medicinal chemistry - II lab	Internal& CA	50	3	2	3	3		2.75	0.70	2.95
		university	40	3					3	2.25	
PS610	Pharmacology - III lab	Internal& CA	50	3	3	2	3		2.75	0.63	2.88
		university	40	3					3	2.25	
PS611	Herbal Drug Technology lab	Internal& CA	50	3	2	3	3		2.75	0.69	2.94
		university	40	3					3	2.25	
PS612	Biopharmaceutics and	Internal& CA	50	3	2	3	3		2.75	0.70	2.95


PRINCIPAL
 Bharat Institute of Technology
 Mangalpally (M), Ibrahimpatnam (M),
 R.R. Dist - 501 510, Telangana.



BHARAT INSTITUTE OF TECHNOLOGY

Mangalpally, Ibrahimpatnam, R.R. District, PIN-501510

(Affiliated to JNTUH, Approved by AICTE and PCI, New Delhi. Accredited by NAAC)

	Pharmacokinetics Lab	university	40	3					3	2.25		
PS701	Instrumental Methods of Analysis	Internal& CA	50	3	2	2	3	3		2.6	0.58	2.83
		university	40	2					2	2.25		
PS702	Industrial Pharmacy-II	Internal& CA	50	3	3	2	3	3		2.8	0.70	2.95
		university	40	3					3	2.25		
PS703	Pharmacy Practice	Internal& CA	50	3	2	2	3	3		2.6	0.58	2.83
		university	40	2					2	2.25		
PS704	Medicinal Chemistry - III	Internal& CA	50	2	1	2	1	1		1.4	0.40	1.90
		university	40	2					2	1.50		
PS707	Pharmacovigilance	Internal& CA	50	3	2	1	2	3	2	2.1	0.58	2.83
		university	40	2					2	2.25		
PS709	Instrumental Methods of Analysis Lab	Internal& CA	50	3	2	3	3			2.75	0.70	2.95
		university	40	3					3	2.25		
S710	Practice School	Internal& CA	50	3	3	3	3			3	0.63	2.88
		university	40	3					3	2.25		
PS711	Industrial Training	Internal& CA	50	3	3	3	3			3	0.67	2.92
		university	40	3					3	2.25		
PS801	Biostatistics and Research Methodology	Internal& CA	50	3	2	3				2.6	0.42	2.67
		university	40	2					2	2.25		


PRINCIPAL
 Bharat Institute of Technology
 Mangalpally (M), Ibrahimpatnam (M),
 R.R. Dist - 501 510, Telangana.



BHARAT INSTITUTE OF TECHNOLOGY

Mangalpally, Ibrahimpatnam, R.R. District, PIN-501510

(Affiliated to JNTUH, Approved by AICTE and PCI, New Delhi. Accredited by NAAC)

PS802	Social and Preventive Pharmacy	Internal& CA	50	2	2	1				1.6	0.58	2.83
		university	40	1						1	2.25	
PS803	Novel Drug Delivery System	Internal& CA	50	1	2	1				1.3	0.42	2.67
		university	40	2						2	2.25	
PS805	Nano Technology	Internal& CA	50	2	1	1				1.3	0.67	0.67
		university	40	1						1	0.00	
PS808	Novel Drug Delivery System Lab	Internal& CA	50	2	3	3				2.6	0.50	2.75
		university	40	3						3	2.25	
24801	Project Work	Internal& CA	50	3	2	3	3	2	3	2.7	0.71	1.35
		university	40	2						3	0.64	
		university	40	3						3	2.25	


PRINCIPAL
 Bharat Institute of Technology
 Mangalpally (M), Ibrahimpatnam (M),
 R.R. Dist - 501 510. Telangana.



BHARAT INSTITUTE OF TECHNOLOGY

Mangalpally, Ibrahimpatnam, R.R. District, PIN-501510

(Affiliated to JNTUH, Approved by AICTE and PCI, New Delhi. Accredited by NAAC)

Summary of POs Attainment

CO-PO matrix of all courses of B. Pharm

Course code	Course Title	PO1	PO2	PO3	PO4	PO5	PO6	PO7	PO8	PO9	PO10	PO11
PS101	Human Anatomy and Physiology I	2.25	0.5	0.75	0.5	0.25	0.75	1	0.25	0.75	0.5	1
PS102	Pharmaceutical Analysis I	2.5	1.75	2	2.5	0.75	1	1.5	0.75	1.5	0.5	1.5
PS103	Pharmaceutics I	2.8	1.8	1.4	2.2	1.2	2.4	2.2	-	1.6	0.6	2.6
PS104	Pharmaceutical Inorganic Chemistry-I	2.8	2.6	2.6	1.6	1.2	1	2.2	0.8	1.6	1.8	3
HS 105	Communication skills	2.75	2.25	1.5	0.75	2.5	2.5	2.25	3	3	-	2.5


PRINCIPAL
Bharat Institute of Technology
Mangalpally (M), Ibrahimpatnam (M),
R.R. Dist - 501 510, Telangana.



BHARAT INSTITUTE OF TECHNOLOGY

Mangalpally, Ibrahimpatnam, R.R. District, PIN-501510

(Affiliated to JNTUH, Approved by AICTE and PCI, New Delhi. Accredited by NAAC)

BS106	Remedial Biology	2.5	2.25	1.5	1.75	1	0.75	2	1.25	1.5	3	3
BS107	Remedial Mathematics	2.75	2.25	2	1.25	1.25	2	1.5	1.5	0.25	0.5	2
PS108	Human Anatomy and Physiology-I lab	3	1.5	2	2.75	1.5	3	2	1.25	1.25	1.5	3
PS109	Pharmaceutical Analysis I lab	2.5	2	2.25	2	1.5	2.5	2.5	1.25	1.25	2.5	2.75
PS110	Pharmaceutics lab	2.5	1.5	2	2.25	1.75	1.75	2	-	1.75	2	2.5
PS111	Pharmaceutical Inorganic Chemistry lab	2.25	0.75	1.25	1.75	0.5	1.75	2	-	1.25	2.5	2.25


PRINCIPAL
Bharat Institute of Technology
Mangalpally (M), Ibrahimpatnam (M),
R.R. Dist - 501 510, Telangana.



BHARAT INSTITUTE OF TECHNOLOGY

Mangalpally, Ibrahimpatnam, R.R. District, PIN-501510

(Affiliated to JNTUH, Approved by AICTE and PCI, New Delhi. Accredited by NAAC)

HS112	Communication skills lab	1.5	1.75	1.25	0.75	2.5	2.5	1.5	3	1.75	-	2
BS113	Remedial Biology lab	2.25	0.5	0.5	2.75	-	1.25	1.25	-	1	-	2
PS201	Human Anatomy and Physiology II	2.75	0.5	0.25	1.25	-	1.5	2	0.5	1	1	2
PS202	Pharmaceutical Organic Chemistry-I	2.5	-	0.25	-	-	2	1.75	1	0.25	1.25	2.5
BS203	Biochemistry	2.25	0.5	0.25	1	-	1.5	1.5	-	1.5	1.75	2.25
BS204	Pathophysiology	2.2	0.4	0.8	0.6	1	2.2	1.4	1.2	2	1.4	2.2


PRINCIPAL
Bharat Institute of Technology
Mangalpally (M), Ibrahimpatnam (M),
R.R. Dist - 501 510, Telangana.



BHARAT INSTITUTE OF TECHNOLOGY

Mangalpally, Ibrahimpatnam, R.R. District, PIN-501510

(Affiliated to JNTUH, Approved by AICTE and PCI, New Delhi. Accredited by NAAC)

CS205	Computer Applications in Pharmacy	2.2	1	1	2.2	-	1.4	1.4	1.6	1.2	-	2
PS206	Human Anatomy and Physiology II lab	2.5	0.75	1.25	2.5	1.5	1.75	2.25	2	2.25	1.25	2.25
PS207	Pharmaceutical Organic Chemistry-I Lab	2.25	1.5	1.25	1.5	0.75	2.25	1.75	0.75	0.75	1.5	2.25
BS208	Biochemistry lab	2	0.75	1	1.75	-	1.25	1.5	-	0.75	-	1.5
CS209	Computer Applications in Pharmacy lab	1.75	1.25	1.25	1.75	-	1.75	1.25	1.25	1	-	2


PRINCIPAL
Bharat Institute of Technology
Mangalpally (M), Ibrahimpatnam (M),
R.R. Dist - 501 510, Telangana.



BHARAT INSTITUTE OF TECHNOLOGY

Mangalpally, Ibrahimpatnam, R.R. District, PIN-501510

(Affiliated to JNTUH, Approved by AICTE and PCI, New Delhi. Accredited by NAAC)

PS301	Pharmaceutical Organic Chemistry-II	2.5	1.25	0.5	-	-	1.75	1.75	-	0.75	0.75	2.5
PS302	Physical Pharmaceutics-I	2.5	0.5	0.75	1	-	1.75	2.25	0.75	1	0.5	2.25
BS303	Pharmaceutical Microbiology	2.2	0.6	1.2	1	0.8	1.4	1.4	0.8	1.6	1.2	2
PC304	Pharmaceutical Engineering	1.8	0.6	0.8	1.8	0.8	1.6	1.8	0.6	-	0.8	2
PS305	Pharmaceutical Organic Chemistry-II Lab	2.5	1.75	1.75	1.5	1.25	1.5	2	-	0.75	1.75	2
PS306	Physical Pharmaceutics-I Lab	2.25	1.75	0.75	1.5	-	2	1.75	1	-	1	2


PRINCIPAL
Bharat Institute of Technology
Mangalpally (M), Ibrahimpatnam (M),
R.R. Dist - 501 510, Telangana.



BHARAT INSTITUTE OF TECHNOLOGY

Mangalpally, Ibrahimpatnam, R.R. District, PIN-501510

(Affiliated to JNTUH, Approved by AICTE and PCI, New Delhi. Accredited by NAAC)

BS307	Pharmaceutical Microbiology Lab	2	1.25	1.25	1.75	1	1.75	2.25	-	0.75	2.25	2.25
PC308	Pharmaceutical Engineering Lab	2.2	1.6	2	2.4	1	1.6	2.2	1	1.6	1.4	2
PS401	Pharmaceutical Organic Chemistry-III	2.2	0.8	1	0.4	0.6	1.8	1.2	0.6	1.4	1.6	2.4
PC402	Physical Pharmaceutics-II	2	0.75	0.5	0.75	-	1.5	1.25	0.75	0.75	-	-
PS403	Pharmacology-I	2.2	1.2	1.2	0.8	-	1.6	1.2	-	0.8	1	1.8
PC404	Pharmacognosy and Phytochemistry-I	1.8	1.4	0.6	1	-	1.6	1.4	0.4	1	1.4	2


PRINCIPAL
Bharat Institute of Technology
Mangalpally (M), Ibrahimpatnam (M),
R.R. Dist - 501 510, Telangana.



BHARAT INSTITUTE OF TECHNOLOGY

Mangalpally, Ibrahimpatnam, R.R. District, PIN-501510

(Affiliated to JNTUH, Approved by AICTE and PCI, New Delhi. Accredited by NAAC)

PS405	Pharmaceutical Jurisprudence	1.75	0.75	1.5	-	0.75	1.75	2.25	-	1.25	-	1.5
PC406	Physical Pharmaceutics-II Lab	2	1	1.6	1.4	1	1.8	1.6	-	0.8	1.2	2.2
PS407	Pharmacology-I Lab	2.5	2	1.5	2.25	1.25	2	2.5	0.75	1.5	1.75	2
PC408	Pharmacognosy and Phytochemistry-I Lab	2.4	0.8	1.6	1.6	0.6	1.6	2	0.6	1.2	2	2.2
PS501	Medicinal Chemistry I	2.4	0.6	1.4	1	-	2	2.6	-	0.8	1	2.2
PS502	Industrial Pharmacy - I	2	1	1	1.4	0.8	1.6	1.6	-	1	-	1.8


PRINCIPAL
Bharat Institute of Technology
Mangalpally (M), Ibrahimpatnam (M),
R.R. Dist - 501 510, Telangana.



BHARAT INSTITUTE OF TECHNOLOGY

Mangalpally, Ibrahimpatnam, R.R. District, PIN-501510

(Affiliated to JNTUH, Approved by AICTE and PCI, New Delhi. Accredited by NAAC)

PS503	Pharmacology II	1.5	0.75	1.5	1	0.75	1.25	1.75	0.75	0.75	-	1.75
PS504	Pharmacognosy and Phytochemistry - II	2.25	1.5	1	0.75	-	1.75	1.5	-	-	1	1.5
PS508	Cosmetic science	2.5	1.5	1	2	1	1.5	2	1	2.25	2.25	2
PC509	Medicinal Chemistry I Lab	1.75	0.75	1.5	1.5	1	0.5	1.75	-	1	1.25	1.75
PS510	Industrial Pharmacy – I lab	2	1.75	1	1.5	0.75	1.75	2	1	1.25	-	1.5
PS511	Pharmacology - II lab	3	1.25	2	2.5	1.75	2.25	3	0.75	1.75	2	2.25


PRINCIPAL
Bharat Institute of Technology
Mangalpally (M), Ibrahimpatnam (M),
R.R. Dist - 501 510, Telangana.



BHARAT INSTITUTE OF TECHNOLOGY

Mangalpally, Ibrahimpatnam, R.R. District, PIN-501510

(Affiliated to JNTUH, Approved by AICTE and PCI, New Delhi. Accredited by NAAC)

PS512	Pharmacognosy and Phytochemistry - II lab	2.5	1.25	0.5	1.5	-	1.5	1.25	-	0.75	1.5	1.25
PS601	Medicinal Chemistry - II	1.8	0.6	0.8	1	0.6	1.4	1.6	-	0.6	-	1.8
PS602	Pharmacology - III	2	1	1	-	0.5	1.5	1.25	-	0.5	-	1.75
PS603	Herbal Drug Technology	1.6	1.2	0.4	0.8	0.6	0.8	1.6	0.6	-	1	1.6
PS604	Biopharmaceutics and Pharmacokinetics	1.6	0.6	0.6	0.8	0.6	1.2	1	-	-	-	1.6


PRINCIPAL
Bharat Institute of Technology
Mangalpally (M), Ibrahimpatnam (M),
R.R. Dist - 501 510, Telangana.



BHARAT INSTITUTE OF TECHNOLOGY

Mangalpally, Ibrahimpatnam, R.R. District, PIN-501510

(Affiliated to JNTUH, Approved by AICTE and PCI, New Delhi. Accredited by NAAC)

PS605	Pharmaceutical Quality Assurance	1.8	0.6	1.4	-	0.8	1.8	1.6	0.8	-	-	1.4
PS609	Medicinal chemistry - II lab	2.5	1.5	1.5	2	2	1.75	2	-	0.75	1.25	1.75
PS610	Pharmacology - III lab	1.5	1.25	1.5	1.5	0.5	1.5	1.25	-s	1	0.75	1.5
PS611	Herbal Drug Technology lab	1.5	1.25	1	1	0.75	1.5	1.5	1	-	1.75	1.75
PS612	Biopharmaceutics and Pharmacokinetics Lab	2	1.75	2	1	-	1	1.75	-	-	1.25	1.75


PRINCIPAL
Bharat Institute of Technology
Mangalpally (M), Ibrahimpatnam (M),
R.R. Dist - 501 510, Telangana.



BHARAT INSTITUTE OF TECHNOLOGY

Mangalpally, Ibrahimpatnam, R.R. District, PIN-501510

(Affiliated to JNTUH, Approved by AICTE and PCI, New Delhi. Accredited by NAAC)

PS701	Instrumental Methods of Analysis	1.4	1	0.6	1	-	1.4	0.8	-	-	-	1.2
PS702	Industrial Pharmacy-II	1.6	0.8	1.4	-	0.8	1	1	-	-	0.6	1.2
PS703	Pharmacy Practice	1.4	1.6	1.4	-	1	1.8	2.2	1.6	1.8	-	1.6
PS704	Medicinal Chemistry - III	1.5	0.5	0.75	1	-	1.75	1.5	-	-	-	2
PS707	Pharmacovigilance	1.8	1.2	1.4	-	0.6	1.8	1.6	-	1.2	-	1.2
PS709	Instrumental Methods of Analysis Lab	2.8	1.4	3	2.6	2	2.6	1.6	1.2	-	1.4	2.6


PRINCIPAL
Bharat Institute of Technology
Mangalpally (V), Ibrahimpatnam (M),
R.R. Dist - 501 510, Telangana.



BHARAT INSTITUTE OF TECHNOLOGY

Mangalpally, Ibrahimpatnam, R.R. District, PIN-501510

(Affiliated to JNTUH, Approved by AICTE and PCI, New Delhi. Accredited by NAAC)

PS710	Practice School	1.5	1.75	1	-	1.5	1.75	2.5	2.25	2.5	-	2
PS711	Industrial Training	2.25	1.25	1.75	1.25	1.25	1.25	1.5	1.5	-	0.5	1.5
PS801	Biostatistics and Research Methodology	1.6	1	1.6	3	-	2	1.6	1.3	-	0.3	1.6
PS802	Social and Preventive Pharmacy	3	2	1.6	1	1.6	2	1.6	1.6	3	-	2
PS803	Novel Drug Delivery System	2.3	1	1.6	-	1	1.3	1.6	-	0.6	-	1.6
PS805	Nano Technology	1.6	0.6	0.6	0.6	-	1.3	1.3	-	-	0.3	1.3


PRINCIPAL
Bharat Institute of Technology
Mangalpally (V), Ibrahimpatnam (M),
R.R. Dist - 501 510, Telangana.



BHARAT INSTITUTE OF TECHNOLOGY

Mangalpally, Ibrahimpatnam, R.R. District, PIN-501510

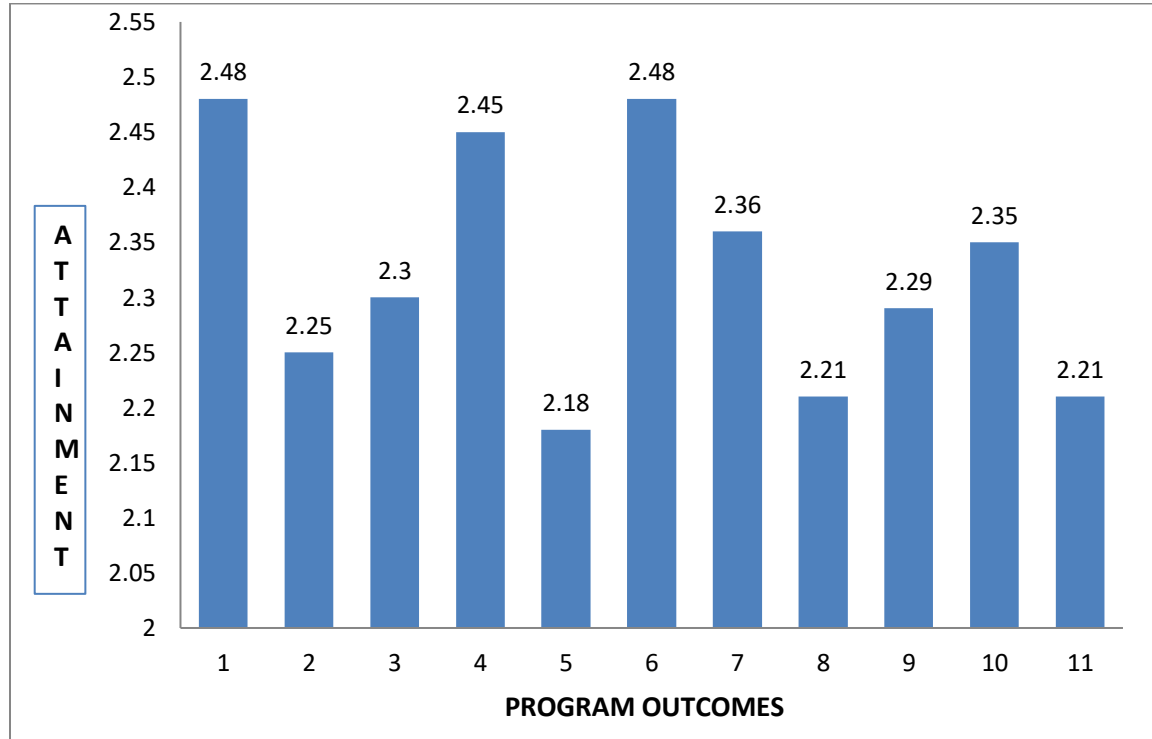
(Affiliated to JNTUH, Approved by AICTE and PCI, New Delhi. Accredited by NAAC)

PS808	Novel Drug Delivery System Lab											
		2	1.6	1.6	1.3	0.6	1.6	2	-	-	-	1.6
24801	Project Work	2.1	1.24	1.4	1.47	1.06	3	1.62	1.45	1.8	1.25	1.62
	Average	2.15	1.20	1.25	1.48	1.06	1.66	1.72	1.13	1.25	1.30	1.94
	80% of direct attainment											
		1.95	1.72	1.7	1.92	1.65	1.88	1.83	1.68	1.76	1.75	1.68
	20% of indirect attainment	0.53	0.53	0.6	0.53	0.53	0.6	0.53	0.53	0.53	0.6	0.53
	Total Attainment											
		2.48	2.25	2.3	2.45	2.18	2.48	2.36	2.21	2.29	2.35	2.21


PRINCIPAL
Bharat Institute of Technology
Mangalpally (M), Ibrahimpatnam (M),
R.R. Dist - 501 510, Telangana.



BHARAT INSTITUTE OF TECHNOLOGY
Mangalpally, Ibrahimpatnam, R.R. District, PIN-501510
(Affiliated to JNTUH, Approved by AICTE and PCI, New Delhi. Accredited by NAAC)




PRINCIPAL
Bharat Institute of Technology
Mangalpally (V), Ibrahimpatnam (M),
R.R. Dist - 501 510, Telangana.